

# PRODUCT INFORMATION PACKET

Model No: 048S17D7204  
Catalog No: D180  
1/4,1725,DP,48Y,1/60/115  
Self Cooled



Regal and Marathon are trademarks of Regal Beloit Corporation or one of its affiliated companies.  
©2019 Regal Beloit Corporation, All Rights Reserved. MC017097E



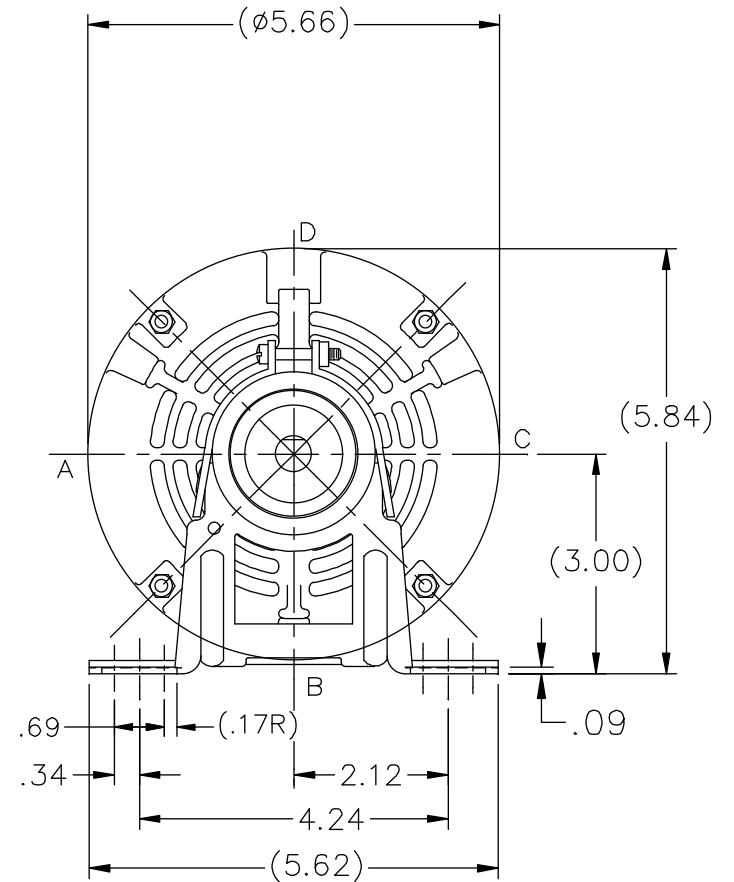
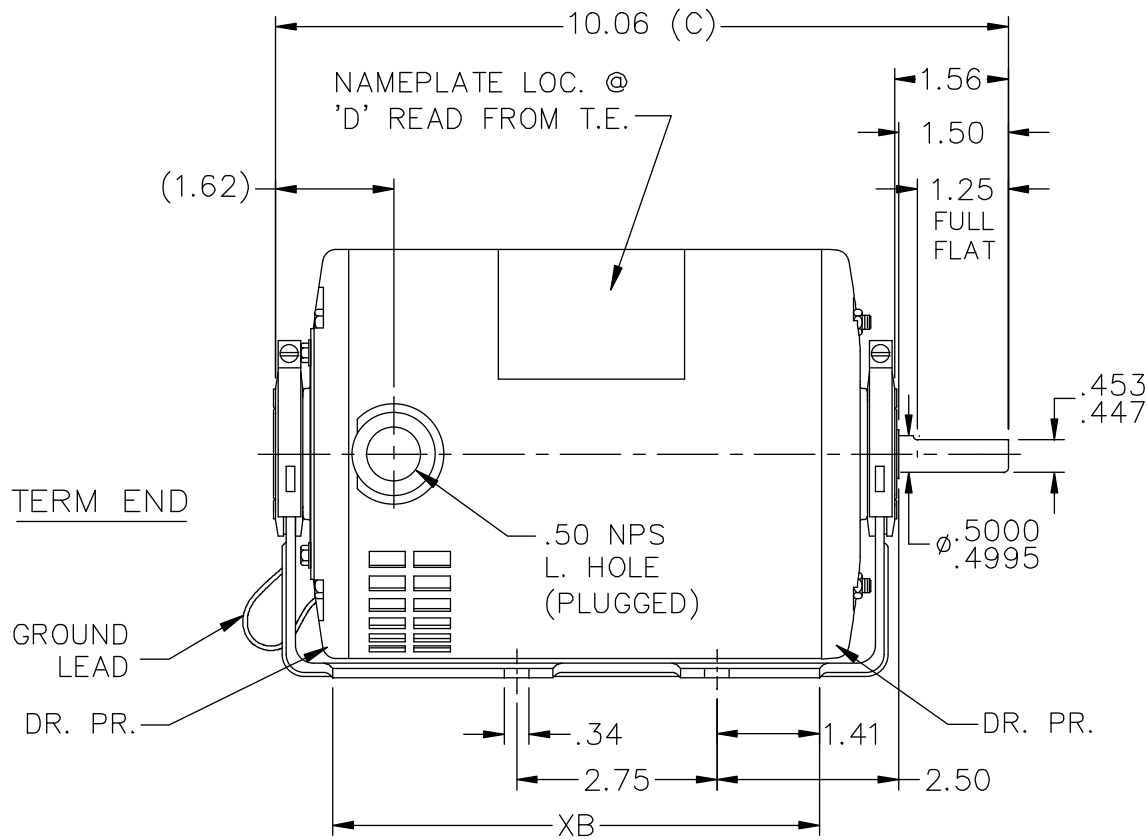
### Nameplate Specifications

Output HP	<b>0.25,0.08 Hp</b>	Output KW	<b>0.19 kW</b>
Frequency	<b>60 Hz</b>	Voltage	<b>115 V</b>
Current	<b>4.1,2.5 A</b>	Speed	<b>1725,1140 rpm</b>
Service Factor	<b>1.35</b>	Phase	<b>1</b>
Efficiency	<b>59.3 %</b>	Duty	<b>Continuous</b>
Insulation Class	<b>B</b>	Design Code	<b>2VT</b>
KVA Code	<b>R</b>	Frame	<b>48Y</b>
Enclosure	<b>Drip Proof</b>	Overload Protector	<b>Automatic</b>
Ambient Temperature	<b>40 °C</b>	Drive End Bearing Size	<b>6203</b>
Opp Drive End Bearing Size	<b>6203</b>	UL	<b>Recognized</b>
CSA	<b>Y</b>	CE	<b>N</b>
IP Code	<b>22</b>		

### Technical Specifications

Electrical Type	<b>Split Phase</b>	Starting Method	<b>Across The Line</b>
Poles	<b>4//6</b>	Rotation	<b>Selective Counterclockwise</b>
Mounting	<b>Resilient Base</b>	Motor Orientation	<b>Horizontal</b>
Drive End Bearing	<b>Ball</b>	Opp Drive End Bearing	<b>Ball</b>
Frame Material	<b>Rolled Steel</b>	Shaft Type	<b>Single Special Extension</b>
Overall Length	<b>10.06 in</b>	Shaft Diameter	<b>0.500 in</b>
Shaft Extension	<b>1.5 in</b>	Assembly/Box Mounting	<b>F1 Only</b>
Outline Drawing	<b>A-SS403686-650</b>	Connection Diagram	<b>A-EE9005B</b>

This is an uncontrolled document once printed or downloaded and is subject to change without notice. Date Created: 02/12/2019



DASH	FRAME	C	XB	DASH	FRAME	C	XB
550	48	9.06	5.69	625	48	9.81	6.44
575	48	9.31	5.94	650	48	10.06	6.69
600	48	9.56	6.19	675	48	10.31	6.94

NO.	REVISION	BY & DATE	CHK	TOLERANCES UNLESS SPECIFIED	
				DEC.	INCHES
				.X	±.1
				.XX	±.03
				.XXX	±.005
				.XXXX	±.0005
				ANG	±7'30"



TITLE OUTLINE  
 MAT'L.  
 FINISH

DRAWN	SP 02-05-2008
CHK	NB 02-05-2008
APPD	NB 02-05-2008
SCALE	3=8
REF	SS75550
FMF	CN 41440
PREV	

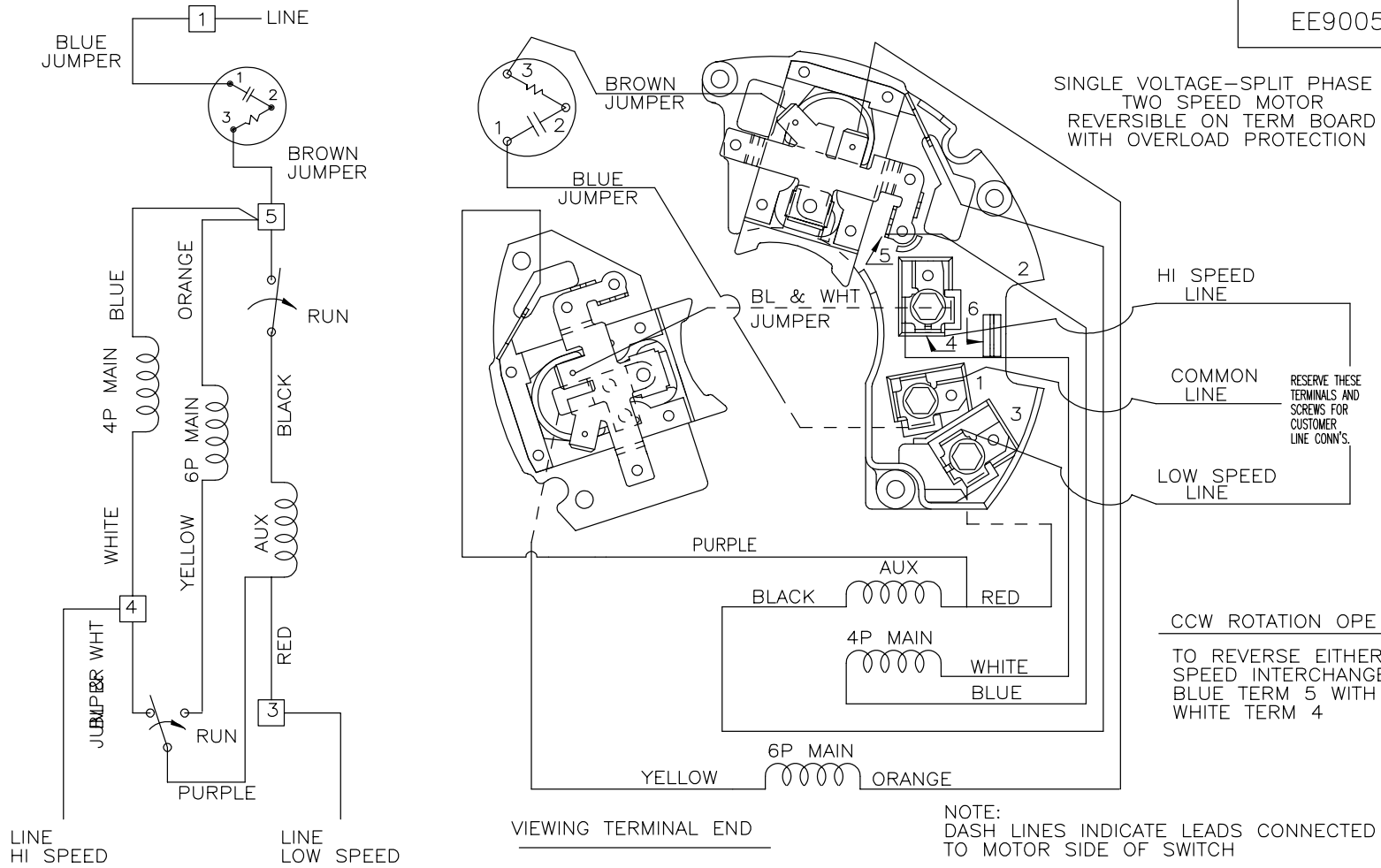
THIS DRAWING IN DESIGN AND DETAIL IS OUR PROPERTY AND MUST NOT BE USED EXCEPT IN CONNECTION WITH OUR WORK ALL RIGHTS OF DESIGN AND INVENTION ARE RESERVED THIS IS AN ELECTRONICALLY GENERATED DOCUMENT - DO NOT SCALE THIS PRINT

RFP	02-05-2008
DIST	WP

CAD FILE	SS403686
SIZE	A

DRAWING NO.	SS403686	PAGE	OF	REV.
-------------	----------	------	----	------

EE9005B



NO.	REVISION	BY & DATE	CHK	ANG	TOLERANCES UNLESS SPECIFIED		MARATHON ELECTRIC	DRAWN RM 12-03-1990	
					DEC.	INCHES			
3	UPDATED PER ECR-0036111	UD 12-19-13	BV	.XX	±.03			CHK ML 12-03-1990	
2	RE-ISSUED CN 6381	RM 12-03-90		.XXX	±.005		TITLE CONNECTION DIAGRAM 48 FR. TWO SPEED	APPD GK 12-03-1990	
1	NEW DRAWING	RM 11-20-90		.XXXX	±.0005		SCALE 3=8	REF	
					±1/2'		MAT'L.	FMF	
							FINISH	PREV	
THIS DRAWING IN DESIGN AND DETAIL IS OUR PROPERTY AND MUST NOT BE USED EXCEPT IN CONNECTION WITH OUR WORK ALL RIGHTS OF DESIGN AND INVENTION ARE RESERVED THIS IS AN ELECTRONICALLY GENERATED DOCUMENT - DO NOT SCALE THIS PRINT				RFP	CAD FILE	EE9005B	SIZE A	DRAWING NO. EE9005B	REV. 03
				DIST					

CERTIFICATION DATA SHEET

Model#: 48S17D7204 G WINDING#: SE48(4-6)8 NONE 1  
 CONN. DIAGRAM: A-EE9005B ASSEMBLY: F1 ONLY  
 OUTLINE: A-SS403686-650

TYPICAL MOTOR PERFORMANCE DATA

HP	KW	SYNC. RPM	F.L. RPM	FRAME	ENCLOSURE	KVA CODE	DESIGN
1/4&1/12	0.19&.06	1200	1725&1140	48Y	DP	R	2VT

PH	Hz	VOLTS	FL AMPS	START TYPE	DUTY	INSL	S.F	AMB°C	ELEVATION
1	60/60	115#115	4.1&2.5	ACROSS THE LINE	CONTINUOUS	B3	1.35/1.35	40	3300

FULL LOAD EFF: -	3/4 LOAD EFF: -	1/2 LOAD EFF: -	GTD. EFF	ELEC. TYPE	NO LOAD AMPS
FULL LOAD PF: -	3/4 LOAD PF: -	1/2 LOAD PF: -	0	SPLIT PHASE	2.2

F.L. TORQUE	LOCKED ROTOR AMPS	L.R. TORQUE	B.D. TORQUE	F.L. RISE°C
6.1 LB-FT	30.1	14.9 LB-FT -	26.6 LB-FT -	-

SOUND PRESSURE @ 3 FT.	SOUND POWER	ROTOR WK^2	MAX. WK^2	SAFE STALL TIME	STARTS /HOUR	APPROX. MOTOR WGT
- dBA	- dBA	0 LB-FT^2	- LB-FT^2	- SEC.	-	0 LBS.

\*\*\* SUPPLEMENTAL INFORMATION \*\*\*

DE BRACKET TYPE	ODE BRACKET TYPE	MOUNT TYPE	ORIENTATION	SEVERE DUTY	HAZARDOUS LOCATION	DRIP COVER	SCREENS	PAINT
STANDARD	STANDARD	RESILIENT BASE	HORIZONTAL	FALSE	NONE	FALSE	NONE	GRAY (POWDER)

BEARINGS		GREASE	SHAFT TYPE	SPECIAL DE	SPECIAL ODE	SHAFT MATERIAL	FRAME MATERIAL
DE	OPE						
BALL	BALL	POLYREX EM	SGL SPL EXT	0.500 x 1.50 IN SEF WITH 1.25 IN FULL FLAT	NONE	1144 STRESSPROOF (C-223)	ROLLED STEEL
6203	6203						

THERMO-PROTECTORS				THERMISTORS	CONTROL	SPACE /n HEATERS
THERMOSTATS	PROTECTORS	WDG RTDs	BRG RTDs			
NONE	AUTOMATIC	NONE	NONE	NONE	FALSE	NONE VOLTS

If Inverter equals NONE, contact factory for further information

\*  
N  
O  
T  
E  
S  
\*

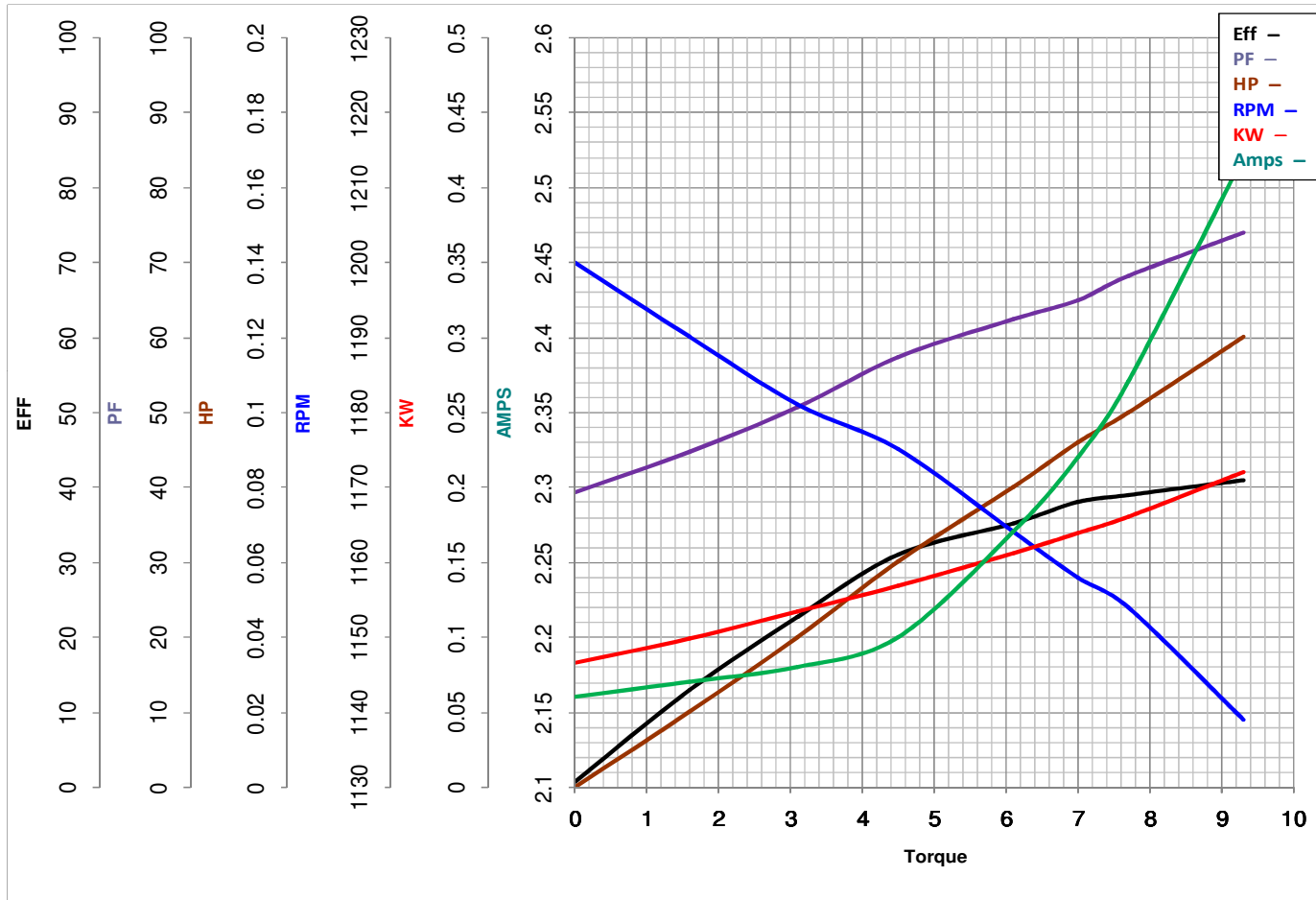
INVERTER TORQUE: NONE
INV. HP SPEED RANGE: NONE
ENCODER: NONE
NONE NONE
NONE NONE PPR
BRAKE: NONE NONE
NONE P/N NONE
NONE NONE
NONE FT-LB NONE V NONE Hz

DATE: 06/29/2017 01:23:30 AM  
 FORM 3531 REV.3 02/07/99  
 \*\* Subject to change without notice.



**MARATHON ELECTRIC CORPORATION**  
TYPICAL PERFORMANCE CURVE for AC MOTOR

Customer \_\_\_\_\_ Curve at 115 Volts HP 0.25&0.08 PHASE 1  
60 HZ  
 Model No 48S17D7204 0.08 HP VOLTS 115&115  
 Catalog No D180 HZ 60&60 RPM 1725&1140



			Torque in Oz.Ft		
FL TORQUE	<u>6.1</u>	Oz.Ft	FL AMPS	<u>4.1</u>	
BD TORQUE	<u>26.6</u>	Oz.Ft	PU TORQUE	<u>14.6</u>	Oz.Ft
LR TORQUE	<u>14.9</u>	Oz.Ft	LR AMPS	<u>30.1</u>	
WINDING	SE48(4-6)8-1		Date	1/8/2019	